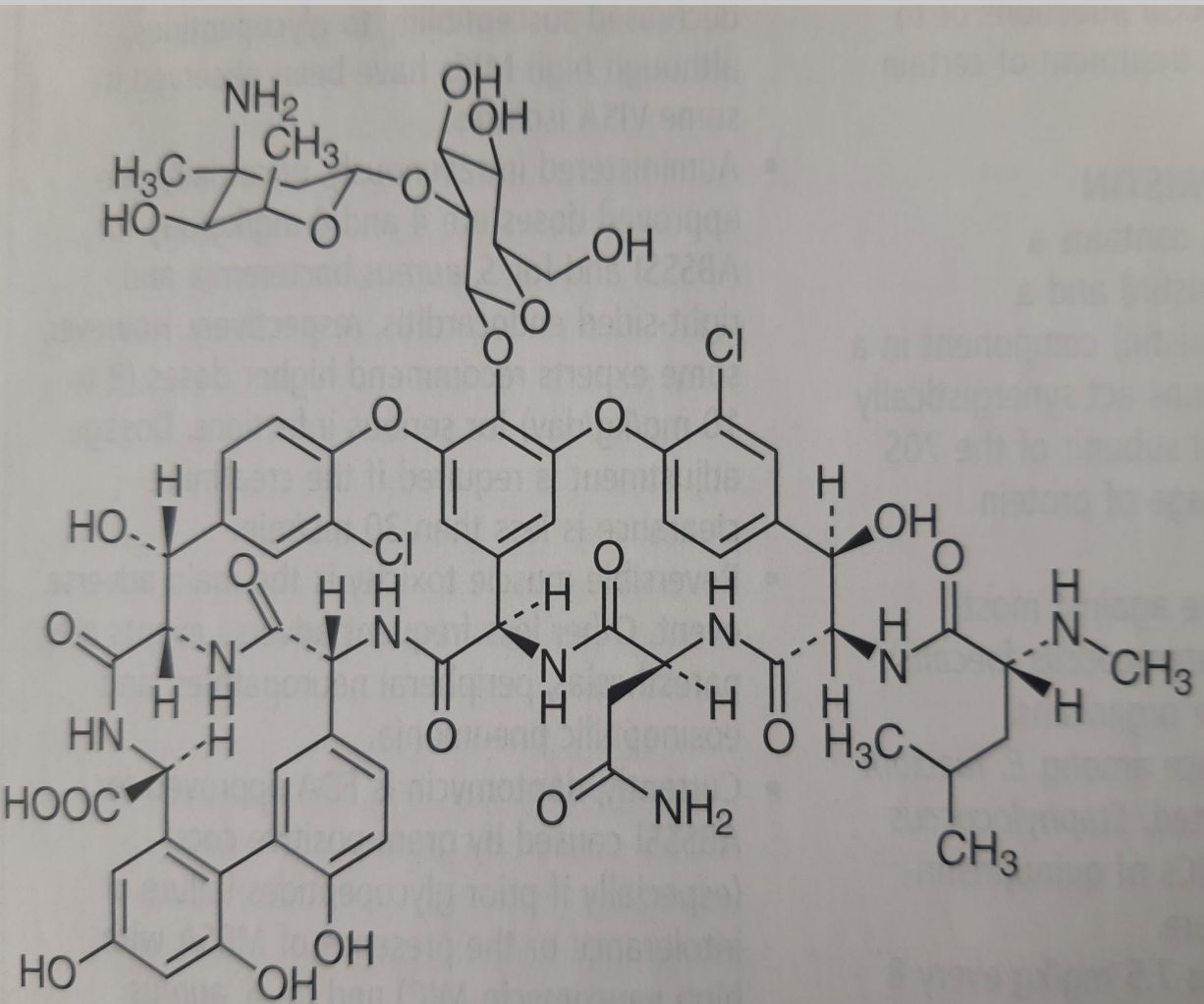


# Ceftazidima espectro de acción (cefalosporinas)

- Su espectro antibacteriano incluye a *N. gonorrhoeae*
- la mayor parte de las enterobacterias: *E. coli*, *Citrobacter*, *Enterobacter*, *Klebsiella*, *Morganella*, *Proteus*, *Providencia*, *Serratia* sp.
- Se destaca por ser la cefalosporina de tercera generación más activa contra *Pseudomonas aeruginosa*.

# Vancomicina espectro de acción



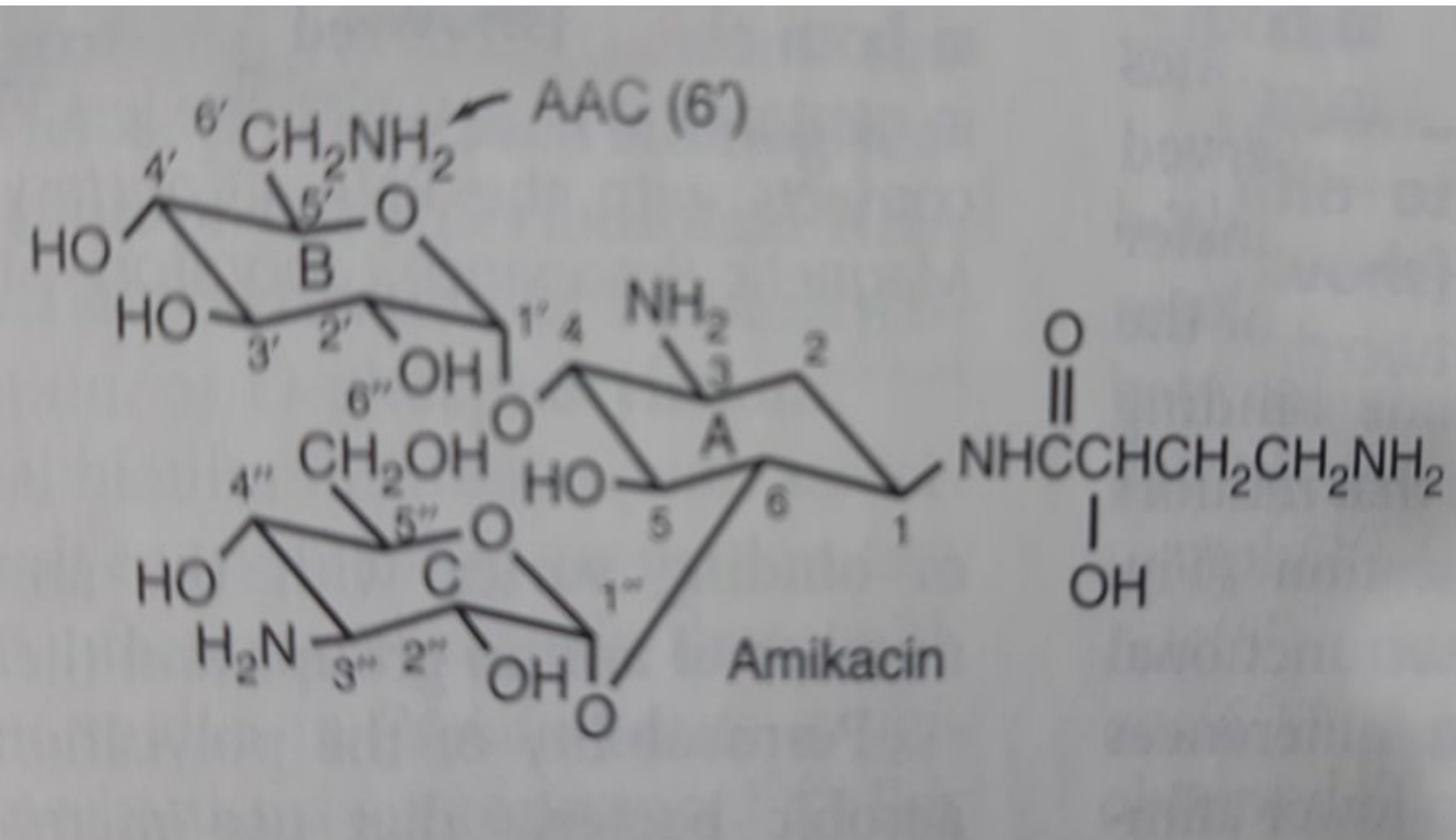
**FIGURE 30-1** Chemical structure of vancomycin.

SENSIBILIDAD	MIC	≤ 1.0
SENSIBILIDAD INTERMEDIA	MIC	2.0
VISA	MIC	2-4

## ACTIVIDAD ANTIMICROBIANA

ENTEROCOCCUS FAECALIS  
 ENTEROCOCCUS FAECIUM  
 STREPTOCOCCUS PNEUMONIAE  
 STREPTOCOCCUS PYOGENES  
 STREPTOCOCCUS AGALACTIAE  
 GRANULICATELLA SPP  
 ABIOTROPHIA DEFECTIVA  
 LISTERIA MONOCYTOGENES  
 BACILLUS ANTHRACIS  
 CORYNEBACTERIUM SPP  
 SAMS  
 SAMR  
 SEMR

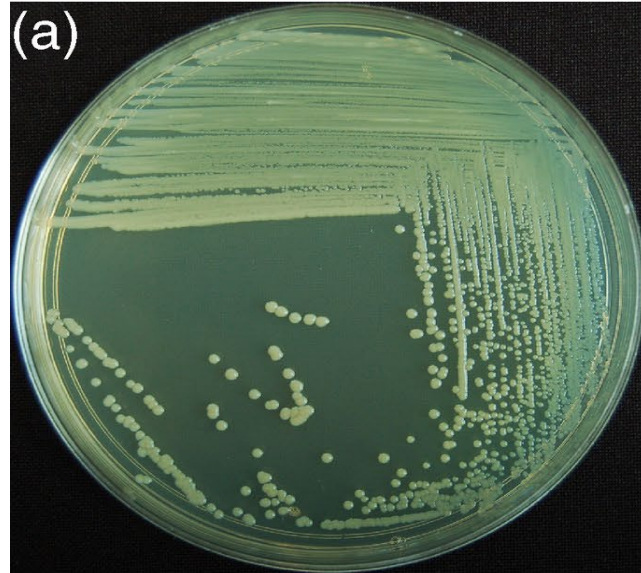
# Amikacina, espectro de acción (aminoglicosidos)



- DIFERENCIAS DE ESPECTRO ENTRE HOSPITALES Y CLINICAS
- P. AERUGINOSA
- K.PNEUMONIAE
- E.COLI
- SERRATIA SPP
- OTRAS ENTEROBACTERIAS

# Acromobacter denitrificans : Aerobio gram(-)

B



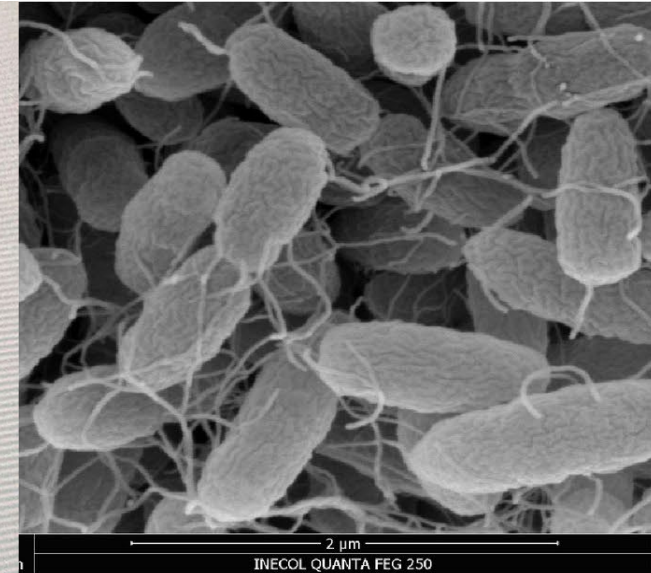
Cultivo

Tipo de muestra: **Ulcera cornea izquierda**

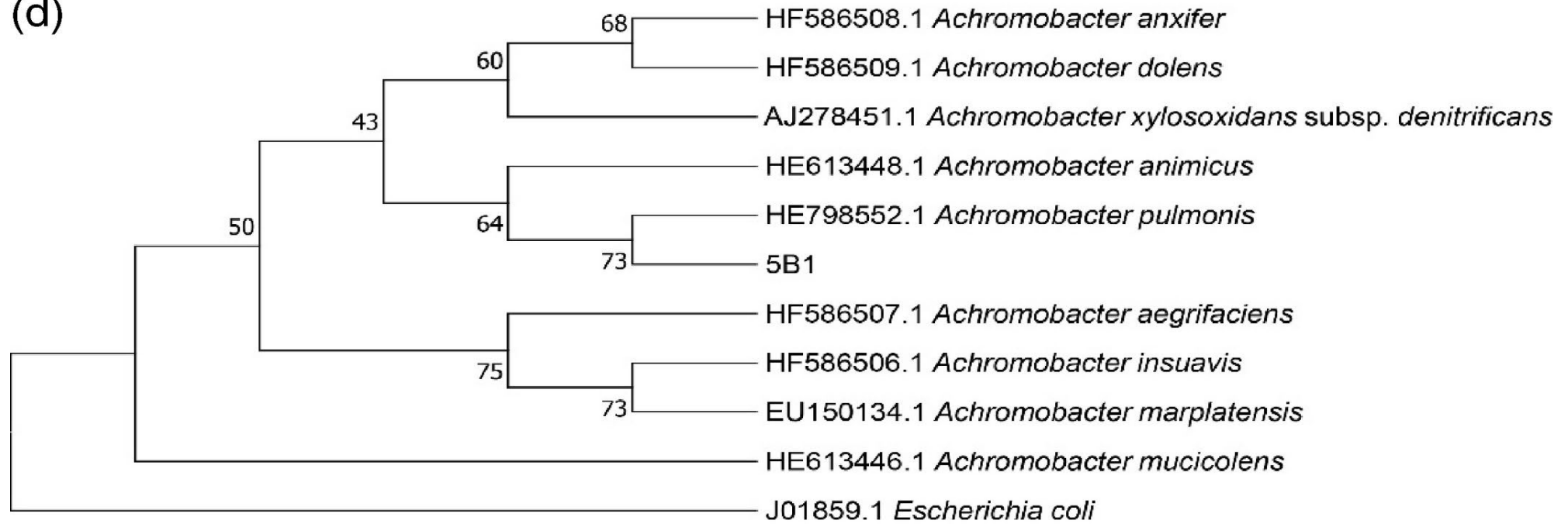
Resultado del Cultivo: **Positivo**

Microorganismo aislado: **Achromobacter denitrificans**

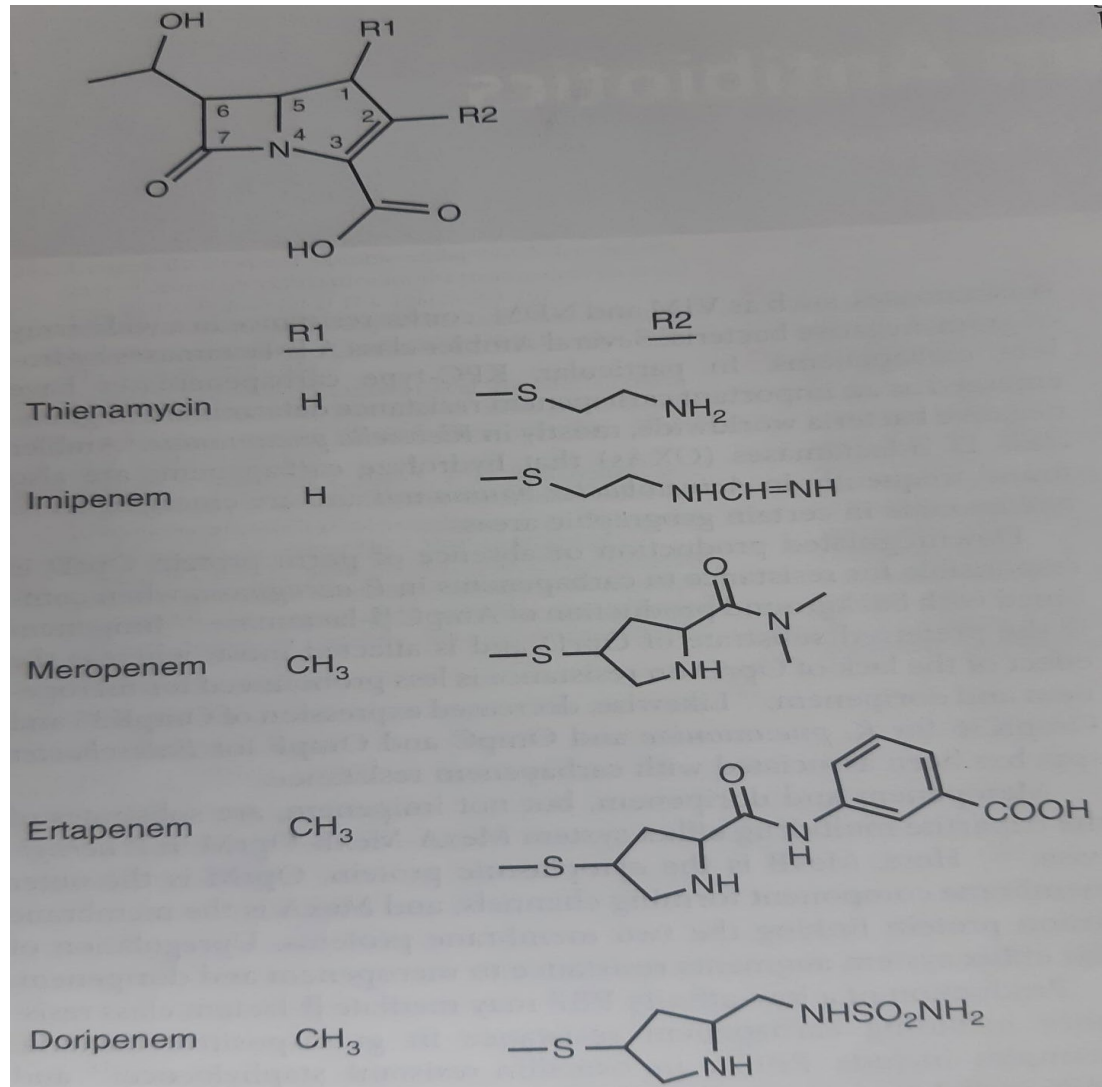
Antibiograma	Interp.	CIM
Amikacina	S	8
Gentamicina	I	8
Imipenem	S	2
Meropenem	S	<= 0,25
Piperacilina/tazobactam	S	<= 4



(d)



# Meropenem, espectro de acción



- *Escherichia coli* MIC 90: 0.03
- *Escherichia coli* BLES 0.06
- *Klebsiella pneumoniae* 0.12
- *Enterobacter cloacae* 0.12
- *Morganella morganii* 0.12
- *Serratia marcescens* 0.12
- *Pseudomonas aeruginosa* 0.5- > 8
- *Acinetobacter baumannii* 0.5- > 8
- *Stenotrophomonas maltophilia* > 8

# STENOTROPHOMONA MALTOPHILIA

**BACILO GRAM NEGATIVO**

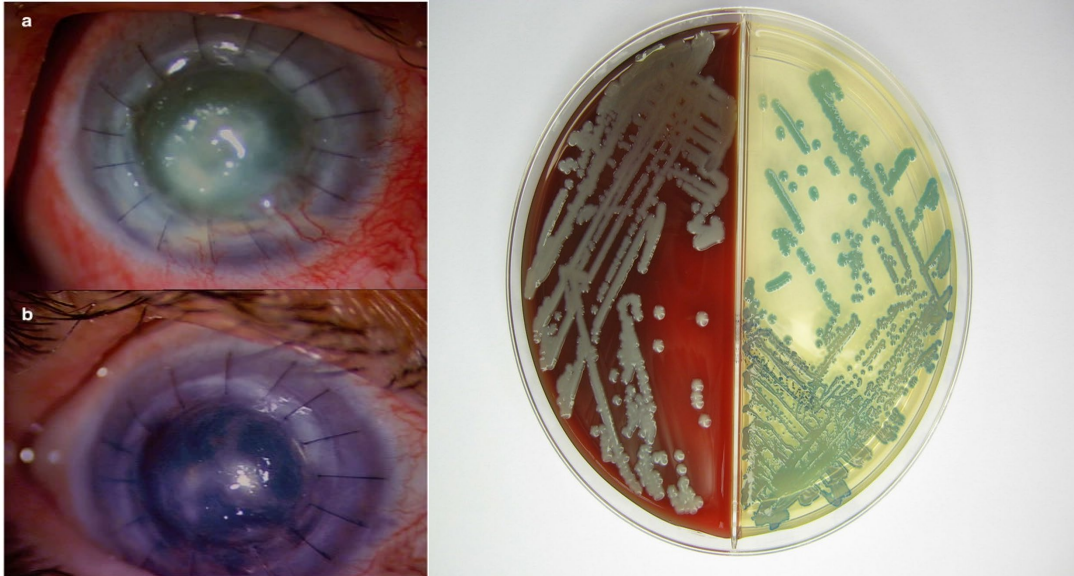
**NO FERMENTADOR**

**NUMERO DE AISLAMIENTOS: 3**

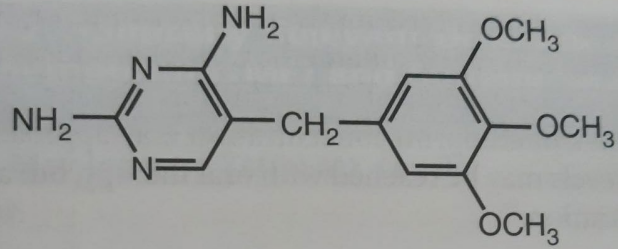
**• PATRON DE SENSIBILIDAD**

**SENSIBLE A :**

- TRIMETHOPRIM SULFA, POTENTE ACTIVIDAD INVITRO, TENDENCIA A AUMENTO DE RESISTENCIA.**
- LEVOFLOXACINA, BUENA ACTIVIDAD MEJOR ACCION EN COMBINACION CON PIPERACILINA TAZOBACTAN Y/O AZTREONAN.**

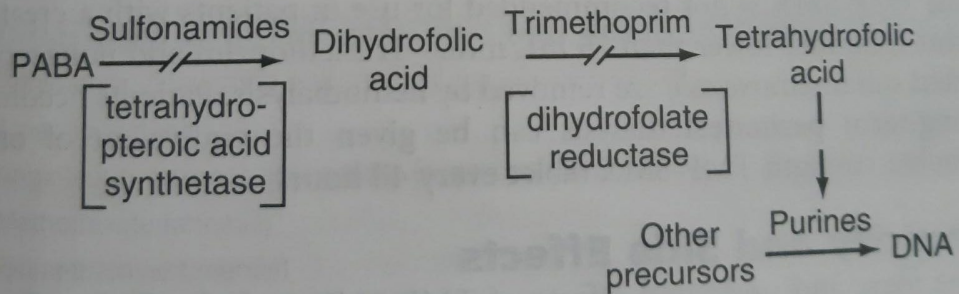


# Trimetoprim sulfametoazol, espectro de acción



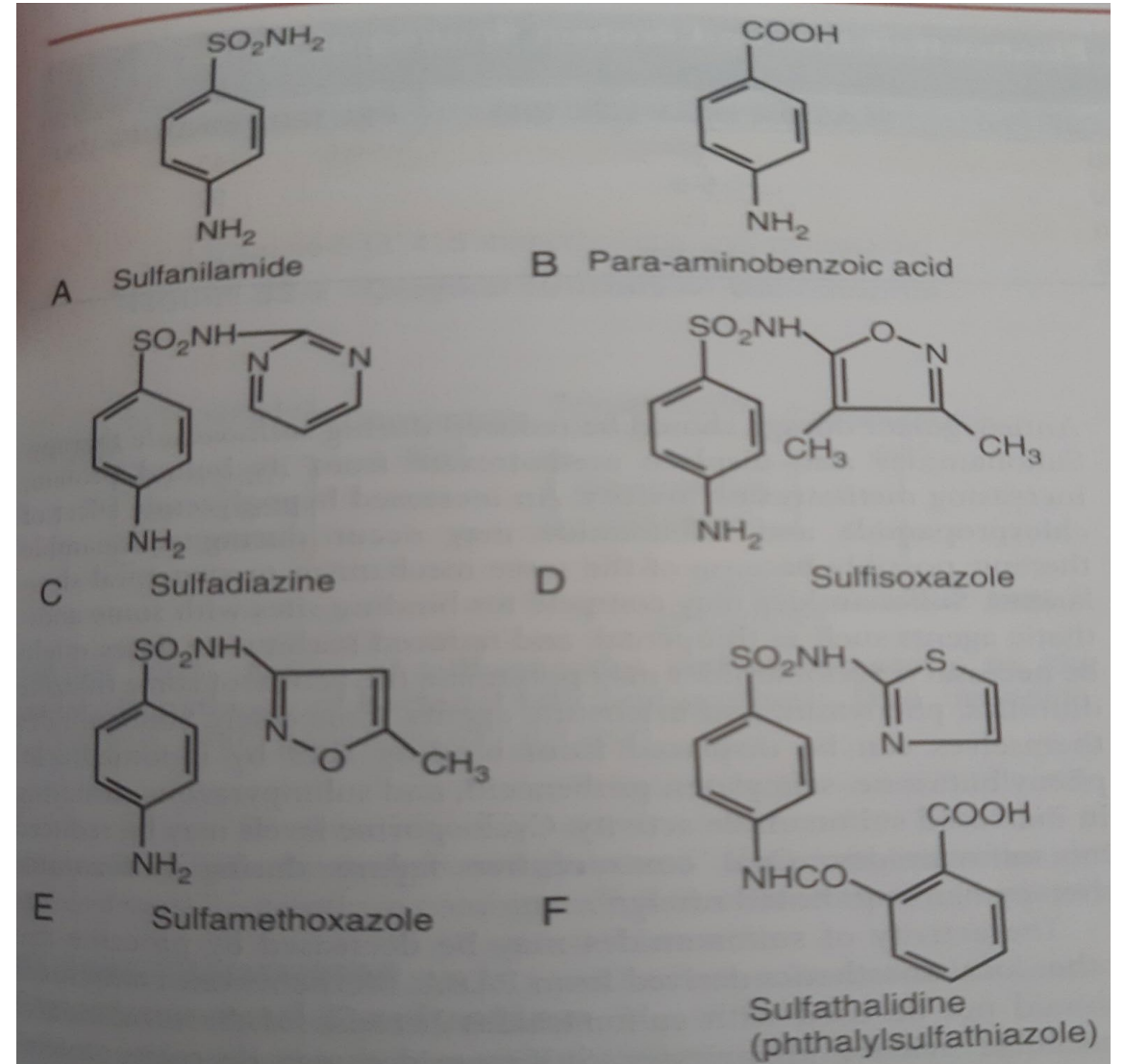
(2,4-diamino-5-[3',4',5'-trimethoxybenzyl] pyrimidine)

**FIGURE 33-2** Chemical structure of trimethoprim.

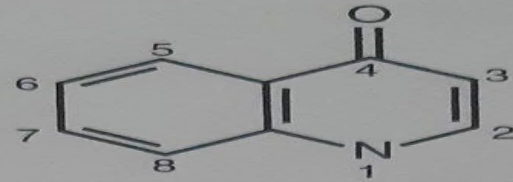


**FIGURE 33-3** Action of sulfonamides and trimethoprim on the metabolic pathway of bacterial folic acid synthesis. DNA, deoxyribonucleic acid; PABA, para-aminobenzoic acid.

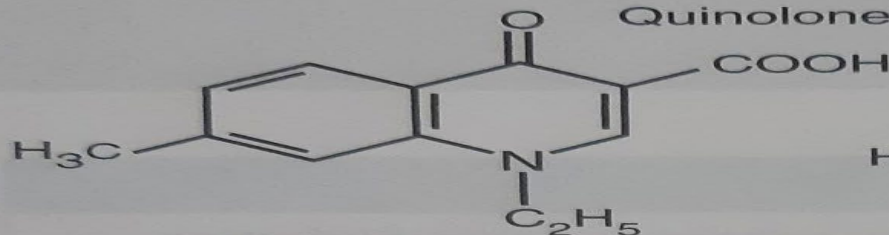
S. AUREUS, SAMR, BURKHOLDERIA CEPACIA, YERSINIA STENOTROPHOMONA MALTOPHILIA, SALMONELLA, SHIGELLA, PNEUMOCYSTIS J.



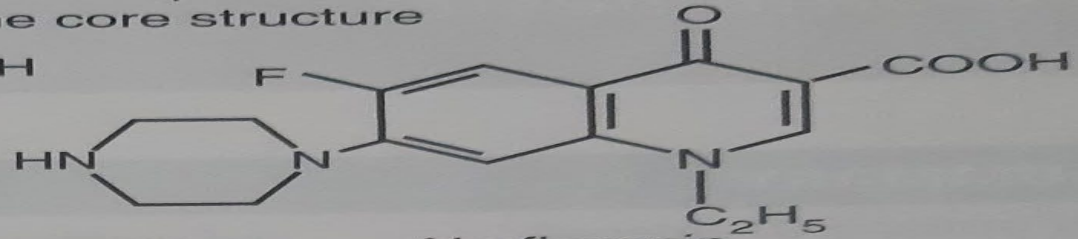
# QUINOLONAS: ESPECTRO DE ACCION / MIC 90



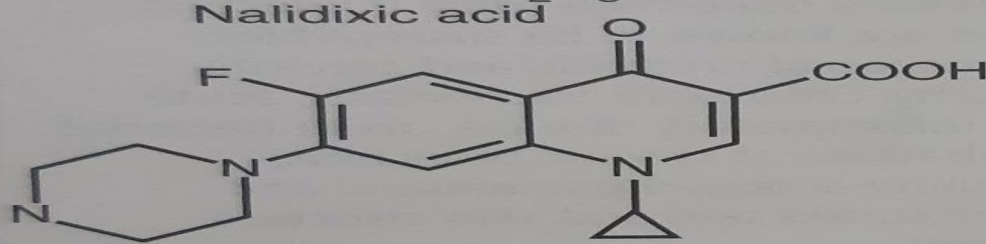
Quinolone core structure



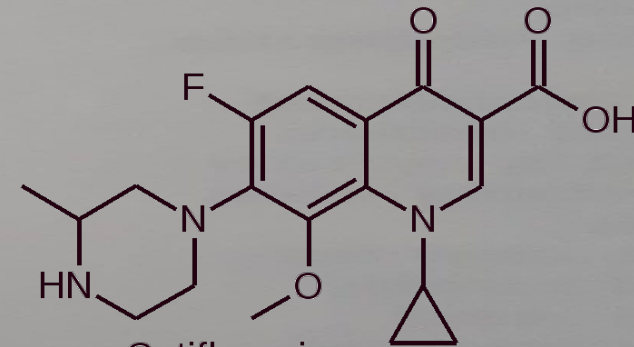
Nalidixic acid



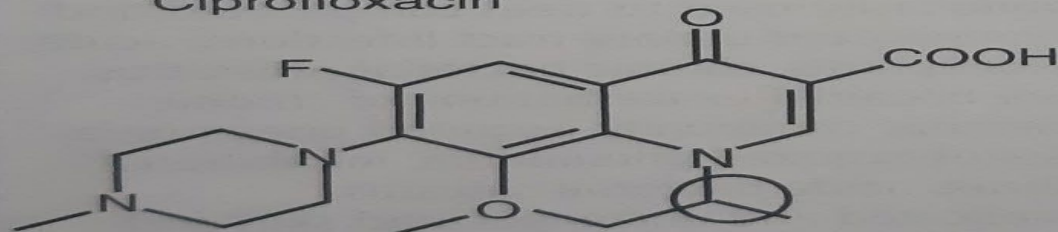
Norfloxacin



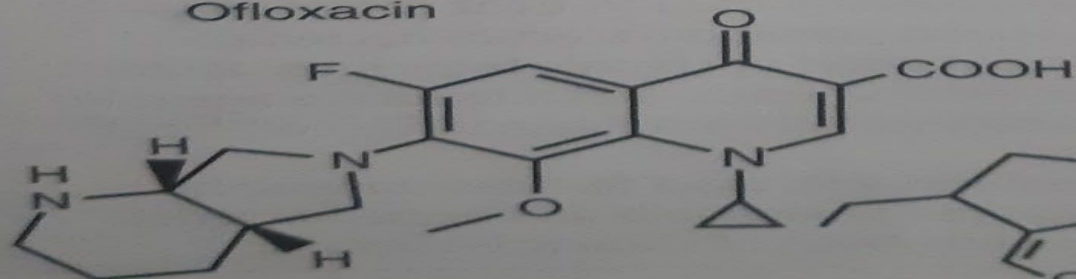
Ciprofloxacin



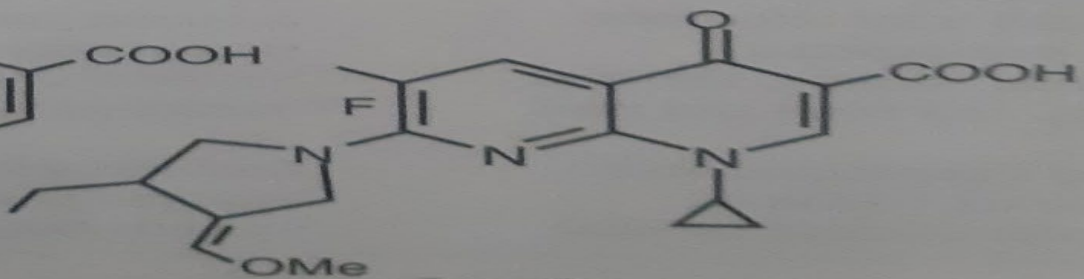
Gatifloxacin



Levofloxacin  
Ofloxacin



Moxifloxacin



Gemifloxacin



# QUINOLONAS: ESPECTRO DE ACCION / MIC 90

MICROORGANISMO	CIPROFLOXACINA	GATIFLOXACINA	MOXIFLOXACINA	LEVOFLOXACINA
ACINETOBACTER SPP	0.25-2	0.03-8	> 0.25-16	0.05-32
CHLAMYDIA PNEUMONIAE	2	0.12	0.06-1	0.5-1
ENTEROBACTER CLOACAE	0.25	0.5	1	0.5
ESCHERICHIA COLI	0.25	0.25	0.25	0.5
KLEBSIELLA PENUMONIAE	0.5	1	1	0.5
MORAXELLA CATARRHALIS	0.015 -0.012	0.03-0.05	0.015-0.12	0.03-0.5
PSEUDOMONAS AERUGINOSA	0.5-128	4-32	8-128	2-128
STENOTROPHOMONA MALTOPHILIA	2-32	2-32	1-128	2-32
SAMS	0.5	0.12	0.12	0.25
SAMR	25-128	4-32	2-16	8-32
SEMR	16	0.25-8	4	0.39-16